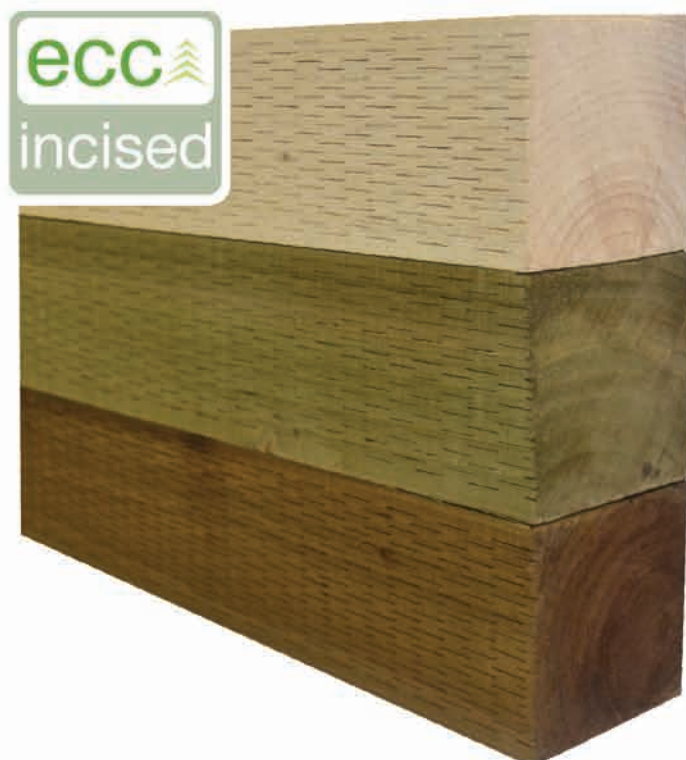


“timber products for life ...”

ecc 
earraí coillte chonnacht teoranta





About ECC

Established in 1992

ECC is supplying quality construction, fencing & pallet timber products to the Irish and UK markets since 1992. Founded by PJ Fahy, the company has grown to become a major force in the Irish and UK timber industry with annual turnover increasing from €1million in 1992 to over €50 million per annum currently. Round log production now exceeds 450,000m³ annually.

The ECC Team

Our team is a skilled and dynamic group who are customer focused and buy into the company ethos which encourages long term staff development, teamwork and loyalty. Employing over 120 full-time staff at our County Galway site, an additional 190 full-time staff are contracted externally in the areas of timber felling, extraction & haulage, our team has formed the backbone to the company's success over the years.

ISO Quality Management

At every stage of the operation our team is committed to quality management and continuous improvement through the use of ISO 9001:2015 Quality Management System. All our processes are highly automated which allows us to control, monitor and measure our product output and quality standards.

A Long Term Supplier

Recognised as a reliable and flexible supplier, ECC has built a reputation throughout Ireland and the UK for consistent quality and on time delivery. Serviced by our committed and experienced sales team based at our offices in Corr na Mona, Liverpool and Hadleigh. Our customer base reaches the four corners of Ireland and the UK. We are the largest exporter of timber to the UK markets from Ireland and deliver to the UK on a daily basis.

Sustainable Forestry

Responsible procurement of raw material forms a core element of the company's day to day management and policies. Fully accredited to the FSC (Forest Stewardship Council) and PEFC (Program for the Endorsement of Forest Certification), we actively promote sustainable forestry management with over 90% of raw material attaining FSC chain of custody.

The Future

Our commitment to the future is ongoing through our continuous investment in the development of our dedicated team and cutting edge technology and equipment. ECC's design and engineering team has sourced the latest technology from around the world making the process one of the most modern and efficient in Europe.

Quality

Operating to a number of international standards including EN14081, IS435/RC25 and ISPM 15 heat treatment, we work closely with recognised certification bodies including BM Trada and NSAI (National Standards of Ireland) to ensure the strictest quality standards are adhered to.

Choice

Producing the full range of Construction and Fencing products, customers can select mixed loads of each product range. We also offer a multi drop service to our customers, giving you flexibility to make smaller orders if we are delivering to within 25miles of your premises.

Service

ECC's large stock holding facility means that we stock a huge range and volume of products, managed by a sophisticated stock control system. Our sales team have access to live inventories on all product lines enabling shorter lead times and just-in-time delivery service.

Environment

Social and Environmental responsibilities are the cornerstone of our day to day operations. Our IPPC license maintained through the Environmental Protection Agency forms the basis of our environmental management program which allows us to improve and maintain our environmental status.



Construction Range pages 4 - 6



Motorway Products page 7



Fencing Range pages 8 - 11



Incised Range page 12 - 13



Pallet & Case pages 14 - 15



Energy & Co-Products pages 16



Forestry Services pages 17



Company Information pages 18



Our comprehensive carcassing range includes all timber components used in the construction of pitched roofs, agricultural buildings, studed partitions and numerous other building applications.

All ECC construction timber is stress graded according to European standard for structural timber EN 14081 to C16 strength class.



The Process



Kiln Dried

With 14 on-site drying kilns, achieving a weekly drying capacity of over 3,500m³. Heated using a 5MW wood residue boiler which supplies a clean, renewable source of energy for our kiln drying process, all construction timbers undergo a stringent drying process to ensure all boards are dried to under 20% moisture, below the 24% required under EN14081 standard.



Visual & Machine Graded

All construction timbers are singulated and stress graded both visually and mechanically to EN 336. A Microtec Goldeneye density scanner determines timbers' strength by combining colour and laser scanning technology with an x-ray of each individual piece. An integrated moisture meter ensures consistent moisture content in each pack.



Planed All Round

A Ledinek 7-head superplan planer guarantees a quality finish with eased edges on all four sides. A high level of automation combined with an integrated powerfeed maximises the running efficiency with no gaps achieving a feed speed of 450m/min. Ability to split on the last head gives production planning extra versatility resulting in shorter lead times.



Certified EN 14081 C16

Each piece is CE marked with an inkjet stamp indicating C16 strength class and company reg number. Each pack is identified with a barcoded label giving full traceability for production and quality. A breathable woven wrapping weatherproofs each pack whilst also minimising the risk of airborne spores.



Construction Range - Product Table



High Pressure Treatment - Green & Brown
Available on all Construction Products

- Non standard lengths available on request
✓ = Available in this length

22mm		Size		Pieces/Packs		Length and Lead Times					
		Nominal	Finished	KD	Tan KD	2.4	3.0	3.6	4.2	4.5	4.8
		100x22	95x19	540	300			✓	✓	✓	✓
		150x22	145x19	360	200			✓	✓	✓	✓
		175x22	170x19	315	175				✓	✓	✓
		225x22	220x19	185	125				✓		✓

35mm PAR	C16 Stress Graded	Nominal	Finished	C16 & Tan C16	2.4	3.0	3.6	4.2	4.5	4.8
		50x35	45x33	504				✓	✓	✓
		75x35	70x33	352	✓	✓				✓
		100x35	95x33	264				✓	✓	✓
		115x35	110x33	240				✓		✓
		125x35	120x33	220				✓		✓
		150x35	145x33	176				✓		✓
		175x35	170x33	154				✓		✓
		225x35	220x33	110				✓		✓

44mm PAR	C16 Stress Graded	Nominal	Finished	C16 & Tan C16	2.4	3.0	3.6	4.2	4.5	4.8
		50x44	42x42	450				✓	✓	✓
		75x44	70x42	288	✓	✓	✓	✓		✓
		100x44	95x42	216	✓	✓	✓	✓		✓
		125x44	120x42	180		✓	✓	✓		✓
		150x44	145x42	144		✓	✓	✓		✓
		175x44	170x42	126		✓	✓	✓		✓
		225x44	220x42	90		✓	✓	✓		✓

47mm PAR	C16 Stress Graded	Nominal	Finished	C16 & Tan C16	2.4	3.0	3.6	4.2	4.5	4.8
		50x47	45x45	384	✓			✓		✓
		75x47	70x45	256	✓	✓	✓	✓		✓
		100x47	95x45	192	✓	✓	✓	✓		✓
		125x47	120x45	160		✓	✓	✓		✓
		150x47	145x45	128	✓	✓	✓	✓		✓
		175x47	170x45	112		✓	✓	✓		✓
		200x47	195x45	96		✓	✓	✓		✓
		225x47	220x45	80			✓	✓		✓

75mm PAR	C16 Stress Graded	Nominal	Finished	C16 & Tan C16	2.4	3.0	3.6	4.2	4.5	4.8
		100x75	95x72	120		✓	✓	✓		✓
		150x75	145x72	80		✓	✓	✓		✓
		175x75	170x72	70			✓	✓		✓
		200x75	195x72	60			✓	✓		✓
		225x75	220x72	50			✓	✓		✓

CLS PAR	C16 Stress Graded	Nominal	Finished	C16 & Tan C16	2.4	3.0	4.8
		75x50	63x38	324	✓		
		100x50	89x38	234	✓	✓	✓

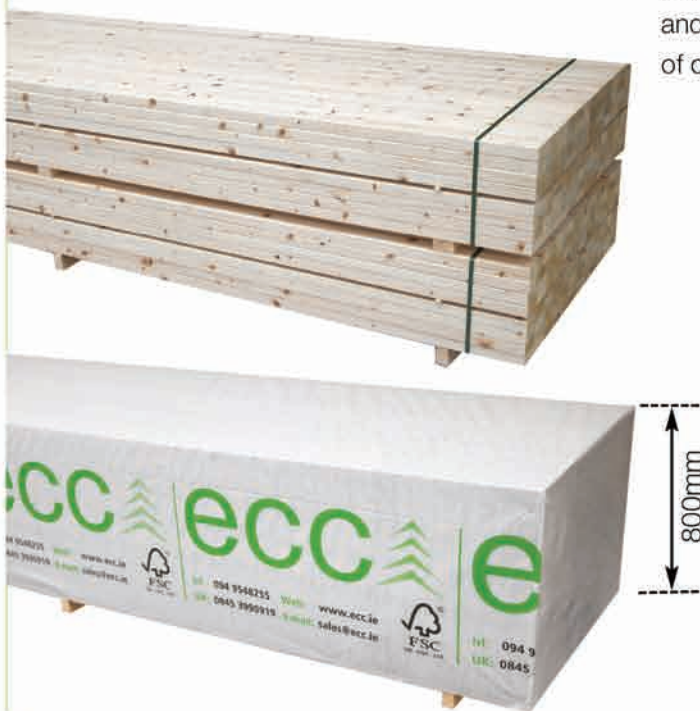
Guaranteed Quality

Each board is individually tested and assessed according to strict quality procedures to ensure conformity with EN14081 standard.



Pack innovation

Our Research into the handling requirements of the industry forms the basis for our development of a number of innovative and unique features that make moving, storage and handling of our packs safe, easy and efficient.



- An Intermediate skid allows each full pack to be easily split for redistribution
- Individual straps on each quarter pack ensures safety during transport
- 800mm high standard pack height.
- The pack height results in smaller quantities allowing the customer to order a bigger variety of product on each load
- Ensures minimum weight for forklift transport
- Safely fits in all racking systems
- Breathable woven wrapping reduces risk of mould
- All banding and wrap are manufactured from plastic which are 100% recyclable

Prompt Delivery

ECC distributes over 25 artic loads per day to the Irish and U.K. timber markets from our extensive stockholding in the west of Ireland. Lead time averages 2 - 3 days ex-stock.





Motorway Timber



ECC supply a full range of motorway products. We have supplied some of the largest motorway projects in Ireland, including the M4, M6 and M7. We also supply motorway certified timber for acoustic solutions for residential, commercial & industrial applications. These have been tested to reduce noise levels by as much as 32 decibels in laboratory conditions while maintaining an attractive and natural facade in the vicinity of the noise barrier.

Motorway Post and Rails - IS 435

All posts used for motorway application are strictly sourced from redwood and include weathered detail and 4 way point. Along with the rails these are kiln dried, stress graded and pressure treated according to IS EN 435. All motorway products are inspected and certified by NSAI personnel.

Motorway Rails

Size	Pieces/Pack	4.2
100x44	120	✓
Non standard lengths available on request		✓ = Available in this length

Motorway Posts

Size	Pieces/Pack	2.1	2.4	3.0
150x75	70	✓	✓	✓
Non standard lengths available on request		✓ = Available in this length		

Highway Sector Scheme 4 - HSS4



ECC supplies a range of products certified to Highway Sector Scheme 4. Please contact our office for more information.



Environmental Noise Barriers



ECC produce components for use in the manufacture of both reflective and absorptive noise barriers. Our reflective acoustic fencing is designed to reflect noise waves with up to 28dB reduction in noise. Alternatively, we supply timber for absorptive acoustic fencing which is covered with a protective membrane on one side of the boards to further reduce noise by an average of 4dB.



The single source for your fencing needs

ECC offers a comprehensive range of quality products to the fencing market. We produce all the main fencing components used in garden sheds, fence panels and landscaping. Our range is pressure treated to the highest standards and is available in multi-drop and mixed load options. Incised UC4 Range is now available

INCISED
NOW AVAILABLE



Comprehensive Range

- Posts
- **Incised Posts**
- Rails
- Gravel Boards
- Cant Rail
- Aris Rail
- Picket Fence
- Round Top
- Feather Edge
- Close Boards
- Weaves
- Battens
- Back Rails
- Boards
- Sleepers
- **Incised Sleepers**
- Gate Posts
- Diamond Top
- D-Rails
- Tongue & Groove
- 4 Way Point
- Weather Top



Seven head Stenner fencing line

Fencing Range - The Treatment Process



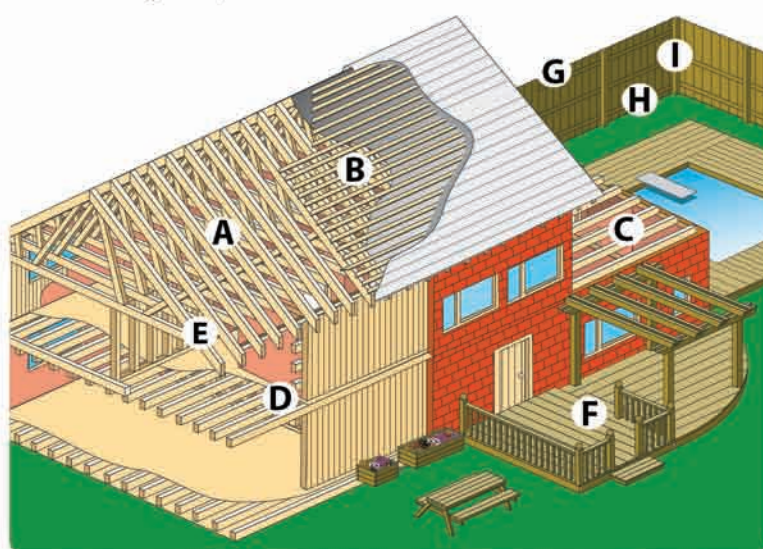
The Preservative - Osmose Naturewood

ECC uses Celcure AC500 for all high pressure preservative treatment services. This preservative system is based on copper, a natural product and known biocide which protects the timber from rots and insect attack over the life of the product.



All ECC Fencing is treated to Use Class

All fencing timbers supplied by ECC are treated to desired service life according to application. The following diagram is intended as a guide only to indicate which Use Class applies to each fencing component.



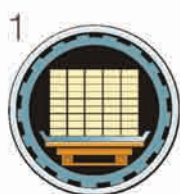
Use Class Table

Use Class (UC)	Use
1	Above Ground, covered
2	Above Ground, covered
3a	Above Ground, coated
3b	Above Ground, uncoated
4	In ground contact

Component

Component	Use Class
A Internal timber	1
B Tiling / slating battens	2
C Flat roof timbers	2
D Fixing Battens	2
E Fascia boards	3a
F Featheredge/Weaves	3b
G Arris & Cant Rail	3b
H Fence Posts	4

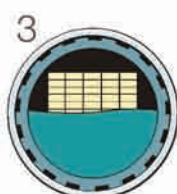
The Preservative Process



1 The timber is transferred into the treatment vessel.



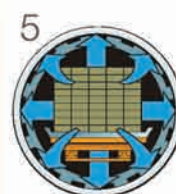
2 A vacuum pulls the air out of the vessel to remove all the air from the internal cells.



3 Timber preservative fills the vessel from the bunded storage tanks.



4 A pressure of 12.4 bar is applied forcing the preservative into the timber.



5 The preservative is removed and final vacuum is applied removing excess preservative.



6 The timber has now been preserved with timber preservative.

Size	Pieces/Pack	Lead Time (days, ✓ = always in stock)					Product Detail
------	-------------	---------------------------------------	--	--	--	--	----------------

Posts - Square End, 4 Way Point, Weathered End.

	Number of pieces per pack	1.5	1.8	2.4	3.0	3.6
75x75 - 3"x3"	210	✓	✓	✓	✓	5
95x75 - 4"x3"	168	✓	✓	✓	✓	5
95x95 - 4"x4"	120	✓	✓	✓	✓	5
100x100 - 4"x4"	120	✓	✓	✓	✓	5
125x75 - 5"x3"	126	✓	✓	✓	✓	5
125x95 - 5"x4"	90	✓	✓	✓	✓	✓
150x75 - 6"x3"	112	✓	✓	✓	✓	5



Weathered finish available.

* 4 Way point also available

Other length / sizes available

Square Rails

	Number of pieces per pack	1.8	2.4	3.0	3.6	4.2	4.8
88x38	312		5	✓	✓		
75x35	360	✓	✓	✓	✓	✓	✓
100x35	288		✓	✓	✓	✓	✓
100x44/47	240	5	5	✓	✓	✓	✓
125x44/47	180	✓	✓	✓	✓	✓	✓
150x44/47	160						



*Motorway Specification available

Gravel Boards - Weather Top available

	1.5 - 3.0	3.6 - 4.8	1.5	1.8	1.828	2.4	3.0	3.6	4.2	4.8
100x18	600		5	5	5	5	5	5	5	5
150x18	400		5	5	5	5	5	5	5	5
175x22		175	✓	✓	✓	✓	✓	10	10	✓
200x22		150	✓	✓	✓	✓	✓	10	10	5
225x22		125	✓	✓	✓	✓	✓	10	10	✓
75x22	675	375			✓	✓	✓	✓	5	5
100x22	540	300	✓	✓	✓	✓	✓	✓	5	5
125x22	405	270	✓	✓	✓	✓	✓	✓	5	5
150x22	360	200	✓	✓	✓	✓	✓	✓	5	5



Cant Rail

		2.4	3.0	3.6	4.2	4.8	
125 x 44/47	216	5	✓	5	10	✓	Plus £15 for lengths longer than 3.6m
175x44/47	168	5	✓	5	10	✓	Pack sizes are total number of rails



Arris Rail

		2.4	3.0	3.6	4.2	4.8	
75x75	300	✓	✓	5	10	10	Plus £15 for lengths longer than 3.6m
100x100	240	✓	✓	5	10	10	Pack sizes are total number of rails



Picket Fence

		.900	1.2	1.8
90x16	715	10	10	10
75x22	720	10	10	10
100x22	540	10	10	10



Round Top Picket - Planed

		.900	1.2	1.5	1.8	2.4
75x22	720	10	10	10	10	10
100x22	540	10	10	10	10	10
150x22	360	10	10	10	10	10



NEW PRODUCT



Fencing Range



Size	Pieces/Pack	Lead Time (days, ✓ = always in stock)	Product Detail
------	-------------	---------------------------------------	----------------

Feather Edge

	70mm block	95mm block	900	1.2	1.5	1.650	1.8	2.4	3.0	3.6
100 x ex22	-----	672	✓	✓	✓	✓	✓	✓	✓	✓
125 x ex22	486	504	✓	✓	✓	✓	✓	✓	✓	✓
150 x ex22	432	448	✓	✓	✓	✓	✓	✓	✓	✓
175 x ex32	-----	196	✓	✓	✓	✓	✓	✓	✓	✓



Note: 2 pieces is equal to one full board
Other lengths and sizes are available

Close Boards/Weaves

	70mm block	95mm block	1.2	1.5	1.8	2.4	3.0	3.6
8mm	-----	1728	5	5	✓	5	5	5
10mm	-----	504	5	✓	✓	5	10	10
12mm	-----	810	5	✓	✓	5	10	10
16mm	-----	648	5	✓	✓	5	10	10



Other lengths and sizes are available

Battens

		1.2	1.5	1.8	1.828	2.4
36x16	1200	10	10	10	10	10
45x16	1040	10	10	10	10	10
47x18	840	10	10	10	10	10
50x22	720	10	10	10	10	10
40x18	945	10	10	10	10	10



Please allow extra lead time for Battens and Back Rails

Back Rails

		1.2	1.5	1.8	1.828	2.4
35x35	630	10	10	10	10	10
47x35	504	10	10	10	10	10
45x45	432	10	10	10	10	10



Please allow extra lead time for Battens and Back Rails

Boards

	1.2 - 2.1	2.4 - 4.8	1.2	1.5	1.650	1.8	2.4	3.0	3.6
75x16	1200	600	✓	✓	✓	✓	✓	✓	✓
90x16	1040	520	✓	✓	✓	✓	✓	✓	✓
95x18	840	420	✓	✓	✓	✓	✓	✓	✓



Other lengths and sizes are available

Sleepers

		2.4
200x100	60	✓
250x125	32	✓



Gate Posts - Diamond Top available

		2.4	3.0	3.6
125x125	81	10	10	10
150x150	56	10	10	10



D-Rail - Kiln Dried and Planed as standard

		3.6	4.2	4.8
100x35	288	✓	✓	✓
150x35	192	✓	✓	✓



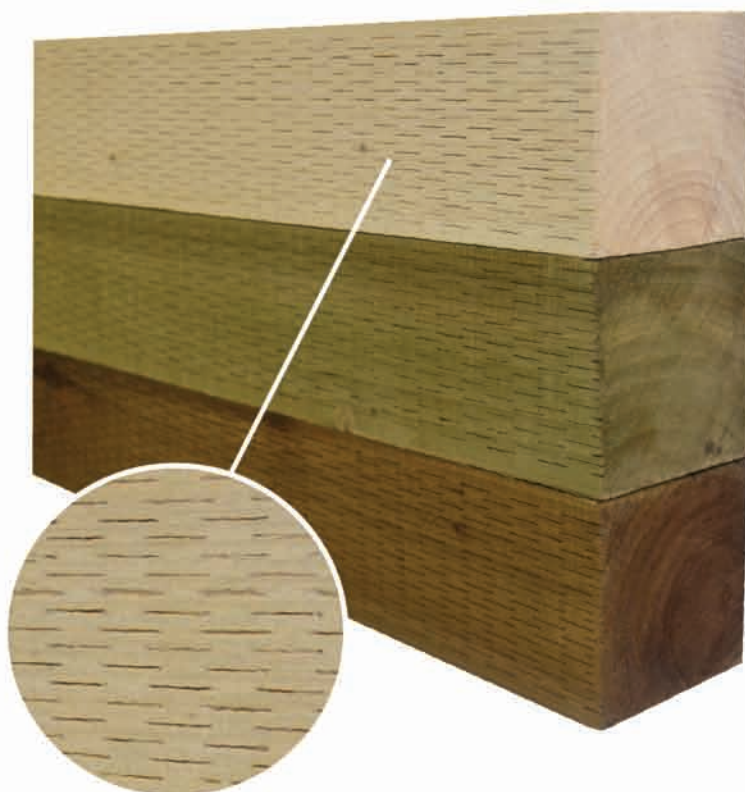
Tongue & Groove

		3.6	4.8
ex150x47	128	5	5
ex200x47	96	5	5



ECC now offer a full range of Incised UC4 fence posts and sleepers which carry a 15 year service life warranty*

Through research of the incised market led the company to invest in a North American RJH Inciser due to the quality of the aesthetic finish and its reputation for reliability and process consistency.



Installation and Maintenance

- Re-working at the installation site should be limited to cross cutting, boring, drilling or notching. All exposed surfaces should then be given two liberal brush coats of a suitable preservative as recommended by the manufacturer of the industrial wood preservative used in the original treatment.
- It is important to remember that the penetration achieved by brush is less than that achieved in the pre treatment process and it is best to avoid or minimise re-working.
- Treated wood must not be pointed after treatment.
- Treated wood must never be rip sawn, thickness or planed along its length. If this takes place, it must be returned to the treatment plant and retreated prior to use.
- The cross cut end of a treated post must never be embedded in the ground. For treated timber to be used in Use Class 4, always put an uncut end in the ground.
- It is important to achieve good drainage away from the treated post; this can be achieved by placing gravel or loose stones into the hole prior to installing the incised post.
- If using a cement-based mix to fix posts in the ground, ensure that water can drain away from the foot of the post. Do not make a 'boot' for a post out of concrete as this will keep the bottom of a post wet for long periods and increase the risk of decay.
- Treated wood must not be moved from their original installation and re-installed.

To activate your 15 year Warranty

Visit www.ecc.ie/incised-timber to register your details under this warranty.

Either:

- Register online and then upload a copy of your invoice **Or**
- Register online and then post a copy of your invoice **Or**
- Telephone: 0845 399 0919 to register your warranty.

N.B. For online registration, a proof of purchase will need to be submitted. Please mail your proof of purchase together with your completed online registration print out to:

ECC Timber, Corr na Mona, Co. Galway, F12 F406, Ireland.

*For full information about the terms and conditions, excluding registration for the warranty programme, please visit our website: www.ecc.ie/incised-timber

Warranty Conditions:

1. This warranty only covers "Incised UC4" posts supplied by ECC Teo.
2. To activate the 15 year warranty, all details and submissions must be registered as outlined above.
3. Registrations for the 15 year warranty must be received no later than 90 days from the invoice date to validate any registration.
4. Upon registration with proof of purchase submitted, the claimant will be sent an email or postal confirmation with notification of registration to the warranty scheme registered on www.ecc.ie/warranty
5. The guarantee is for the cost of re-supply by ECC Teo, of a component that is proven to have failed as a result of fungal decay or insect attack within 15 years of supply.
6. It does not cover the costs of removal or reinstatement of such components or consequential costs or loss due to failure of the component.
7. To submit a warranty claim you must:
Contact the ECC Customer Sales on 0845 3990919 or info@ecc.ie within two weeks of 15 year expiry date to make the request and provide proof of registered warranty, as per written confirmation sent at the time of online warranty registration
8. On submission of a claim for product failure to ECC Teo under this Warranty, the customer shall provide ECC Teo with:
 - (a) A cross section of the timber (minimum 200mm length) exhibiting the product failure due to fungal decay or insect attack that is sufficient for testing.
 - (b) Such other information as ECC Teo may reasonably require such as access to the site of installation etc.
 - (c) A photograph of the affected product in situ
9. ECC Teo will promptly investigate the complaint and establish the issues surrounding the claim before a final decision is made on product replacement.
10. The terms "rot" and "fungal decay" as used in this Guarantee mean attack by wood destroying fungi that disintegrate the wood cell walls.
11. "Weathering" of wood is not fungal decay or rot of any type or definition and is excluded.
12. The term 'insect attack' refers to attack by wood destroying insects that destroy the timber structure such as termites.
13. The term 'failed' refers to damage caused by insects and/or fungi to render the component no longer fit for purpose.
14. Only ECC Teo "Incised UC4" Timber treated to Use Class 4 must be used in ground contact situations.
15. Users should refer to additional information in relation to exclusions available at www.ecc.ie
16. The 15 year warranty is not transferable and no alternative will be offered.
17. This guarantee does not affect the statutory rights of the consumer.

Exclusions

This Warranty does not apply to:

1. Consequential Loss
2. Accidental Damage or Subsidence
3. Failure to follow installation recommendations in the ECC 15 year warranty information booklet.
4. Labour associated with removal and replacement of any warranted products.
5. Colour variation. (Wood is a natural product and colour variation will occur)
6. Any ECC Teo 'ECC Incised' pressure treated fencing components supplied for use outside of European markets.
7. Removal of Incised timber from their original installation and re-used at a new location.
8. Building poles, commercial vineyard stakes or peeler core landscape timbers.
9. Damage caused by 'weathering' of wood, including but not limited to raised grain, splitting, cracking, twisting, warping, shrinkage, swelling or any other physical property of the wood, or where untreated material is exposed by the effects of this weathering.
10. Timber degrade which is the result of the natural movement of wood in service, including weathering, twisting and splitting of components.
11. A piece of treated timber that is cut, drilled or notched after preservation unless the exposed
12. Areas of wood where preservative surface penetration is consistently limited to less than 3mm or is effectively unachievable due to natural variations in the wood substrate and/or abnormal growth characteristics.
13. Mould growth on treated wood products.
14. Damage during transit or in storage.

ECC's Pallet & Case products offer the customer both choice of product and flexibility of service. We supply all pallet orders in mixed loads and can offer **"Just in Time"** delivery on most of our ranges, due to our large stock holding facilities.

Non-Standard Lengths

With over 20 years experience supplying the pallet and packaging industry we recognise the need for flexibility in relation to sizes and product specification. To satisfy this we offer non-standard lengths and sizes on request. Our 60 bin dropsorter facilitates this service with 2 high speed CNC automatic cross cuts finishing to within 2mm tolerances.

ISPM 15 Heat Treatment

ECC is a certified member of the ISPM 15 scheme, which is an International Standard, set up to reduce the risk of the introduction and/or spread of quarantine pests associated with wood packaging material made from coniferous wood. This is achieved by heating the core of bark free wood to 56° for 30 minutes (DBHT 56/30). Our company reg number for ISPM15 is IE-041.

Kiln Drying

With 14 on-site drying kilns, achieving a weekly drying capacity of over 3,500m³, heated using a 5MW wood residue boiler which supplies a clean, renewable source of energy for our kiln drying process, all timbers undergo a stringent drying process to ensure all boards are dried to under 20% moisture. Each cycle takes between 5 to 7 days.





Pallet & Case



Block

Size	Pieces/Pack	1.0	1.2	1.5	1.8	2.1	2.4	2.7	3.0
75x75	270	✓	✓	✓	✓	✓	✓	✓	✓
90x70	234	✓	✓	✓	✓	✓	✓	✓	✓
90x90	182	✓	✓	✓	✓	✓	✓	✓	✓
90x75	216	✓	✓	✓	✓	✓	✓	✓	✓
95x75	168	✓	✓	✓	✓	✓	✓	✓	✓
95x95	144	✓	✓	✓	✓	✓	✓	✓	✓

Non standard lengths available on request

✓ = Available in this length

Bearer

Size	Pieces/Pack	1.0	1.2	1.5	1.8	2.1	2.4	2.7	3.0
75x35	555	✓	✓	✓	✓	✓	✓	✓	✓
75x44	450	✓	✓	✓	✓	✓	✓	✓	✓
95x35	444	✓	✓	✓	✓	✓	✓	✓	✓
95x44	360	✓	✓	✓	✓	✓	✓	✓	✓

Non standard lengths available on request

✓ = Available in this length

Boards

Size	Pieces/Pack	1.0	1.2	1.5	1.8	2.1	2.4	2.7	3.0
75x16	1200	✓	✓	✓	✓	✓	✓	✓	✓
90x16	1040	✓	✓	✓	✓	✓	✓	✓	✓
95x18	840	✓	✓	✓	✓	✓	✓	✓	✓
95x22	720	✓	✓	✓	✓	✓	✓	✓	✓
100x22	720	✓	✓	✓	✓	✓	✓	✓	✓
150x22	480	✓	✓	✓	✓	✓	✓	✓	✓

Non standard lengths available on request

✓ = Available in this length

Alongside our sawn timber range, we also produce a number of co-products from the sawmilling process which provide the raw material to a number of timber related industries thus ensuring zero waste from the timber process. Throughout our process, production planning, scanning and optimisation technology is employed to maximise the sawn timber content or yield of each log



Woodchip

Woodchip serves many uses from the production of MDF (Medium Density Fibreboard) to the manufacture of door skins, it is an extremely versatile material. Woodchip is also used for the production of clean energy in CHP Biomass and the production of wood pellets. ECC debark all logs on the infeed to the mill thus virtually eliminating the bark content in our woodchip.



Sawdust

All by-product from the milling process is separated on a multi layer shaker system, the sawdust is screened from the woodchip providing a raw material which is used in many applications. As wood products are increasingly used for biomass energy the demand for our sawdust and woodchip has increased. This raw material allows ECC to generate its own fuel source for use in our 5MW woodwaste boiler providing a renewable energy source for heating our Kiln Drying Process.



Bark

Bark and butt chip is sold to local companies, where it is mulched and used for landscaping and gardening projects.

Dry Shavings

Shavings are a by-product of our planing process. Investment in a state of the art extraction system included two separate cyclones, a chain filter unit and conveyor system that transfers the shavings and dust separately from the planing line into a 500 m³ concrete bunker. The innovative recirculation of exhaust air from the cyclones into the chain filter leaves the shavings almost completely dust free whilst also protecting the environment from emissions of fine dust.





Forestry Services



ECC procure and process over 450,000 m³ of round log per annum. Sourced throughout the country, the majority of our intake derives from forests located in the western counties of Galway, Mayo, Roscommon, Sligo, Leitrim, Donegal and Clare. We receive supply from both private forestry owners and Coillte (Irish State Forestry Board) who are our main supplier.



Sustainable Forestry Management

All our forestry operations are FSC certified. The FSC (Forest Stewardship Council) is an international not-for-profit, multi-stakeholder organization established in 1993 to promote responsible management of the world's forests. Its main tools for achieving this are standard setting, independent certification and labeling of forest products. This offers customers around the world the ability to choose products from socially and environmentally responsible forestry.

Please contact our forestry dept for our current FSC certificate.

Ir: 094 95 48255 **UK:** 0845 3990919

Log Purchases

ECC actively consult with and procure raw material from private forestry owners. Our professional and experienced forestry team can visit your site, give a detailed quotation or simply answer any questions you may have. Now seeking Clearfalls, Windblow and Subsequent Thinnings Nationwide.

ECC Timber Removal System

To ensure the security of Private Forestry, ECC operate a comprehensive TRS (Timber Removal System) whereby each load is notified by text notifications prior to collection and tracked electronically by GPS. In addition, ECC use remote CCTV to monitor private sales.

Contacts:

Willie Nally, *Procurement Manager*,
M: 087 2586138, E: willienally@ecc.ie

Dermot Morgan, *Harvesting Manager*,
M: 087 9137638, E: dermotmorgan@ecc.ie





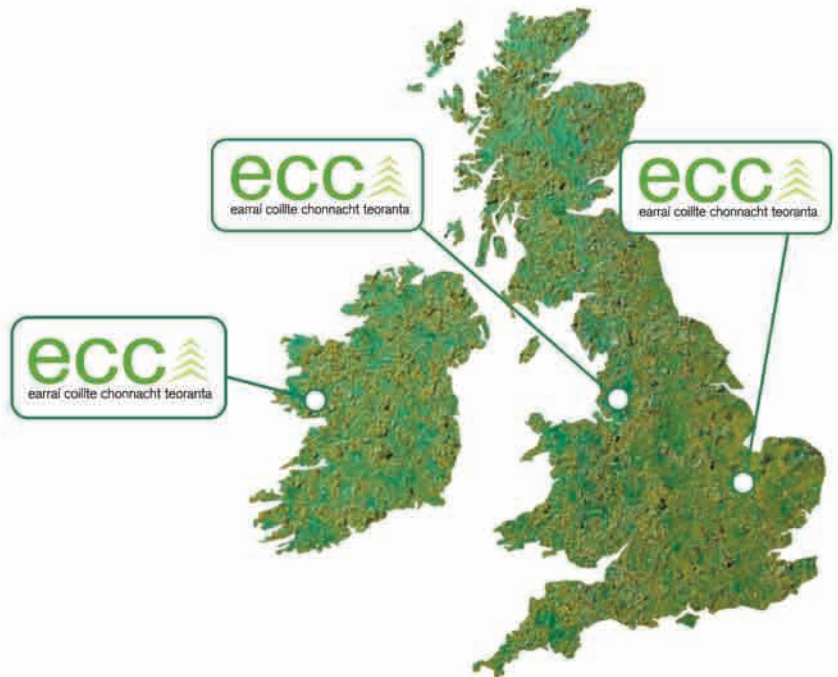
Earraí Coillte Chonnacht Teoranta,
Corr na Mona, Co. Galway, F12 F406,
Ireland.

UK: 0845 3990919

Irl: 094 9548255

E: sales@ecc.ie

W: www.ecc.ie



Visit us online **www.ecc.ie**

For the latest news, available stock and special offers, visit: www.ecc.ie.

New customers can download our Account Application Form and submit a quote request on line.



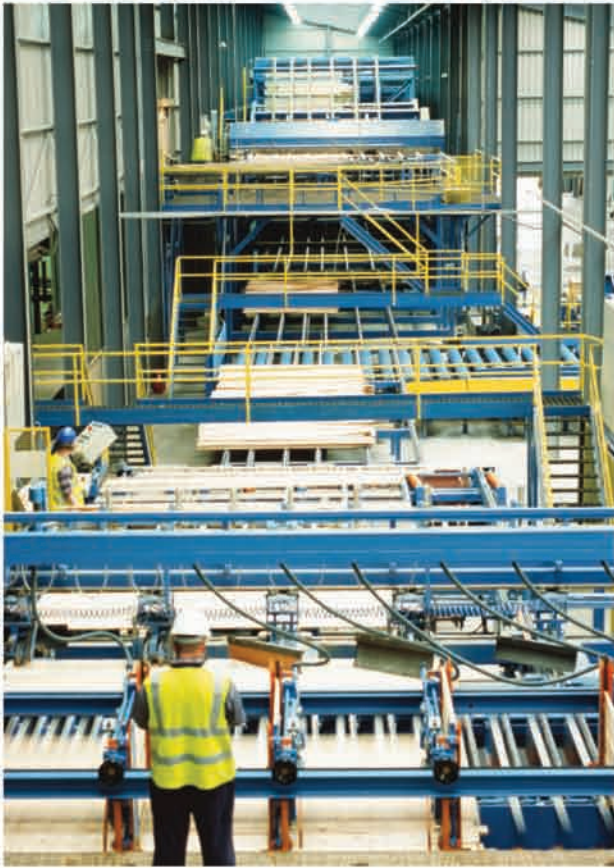
Download the **ECC App**

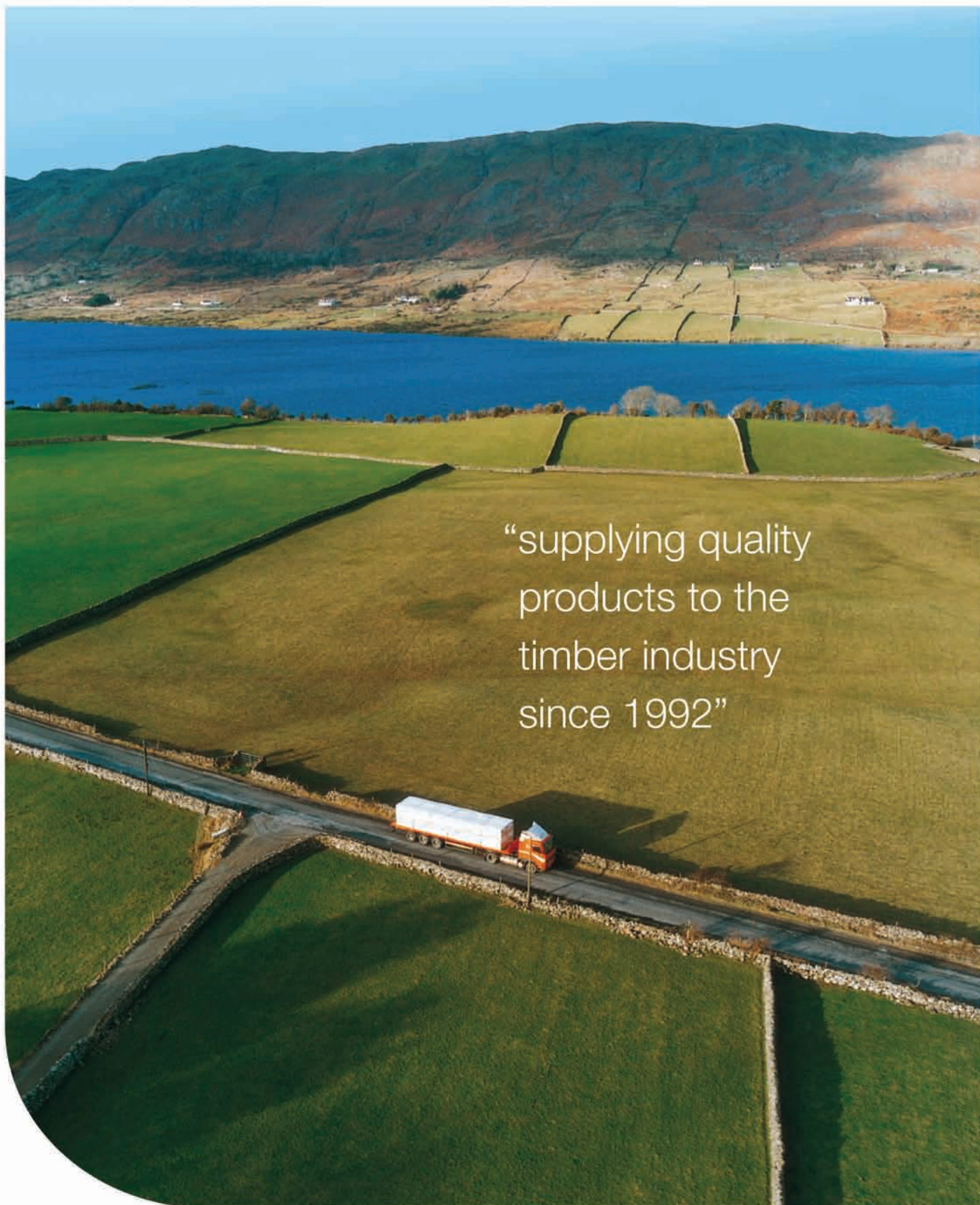


Keep up to date with ECC Timber Products download the ECC App on Google Play or the App Store



Use our QR Code to bring you right to our web site. You can download free Android or iTunes App for your smart phone.





“supplying quality
products to the
timber industry
since 1992”